

25 December

THE NATIVITY OF THE LORD [CHRISTMAS]

Solemnity

At the Vigil Mass

ENTRANCE ANTIPHON

Hodie scietis. Cf. Ex 16 : 6-7

- i -

6.

T

O- day you will know * that the Lord will come,

and he will save us, and in the morn- ing you will see

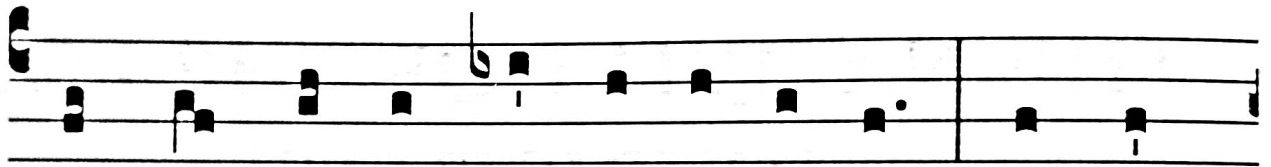
his glo- ry.

VERSES

Domini est terra. Ps 23:1

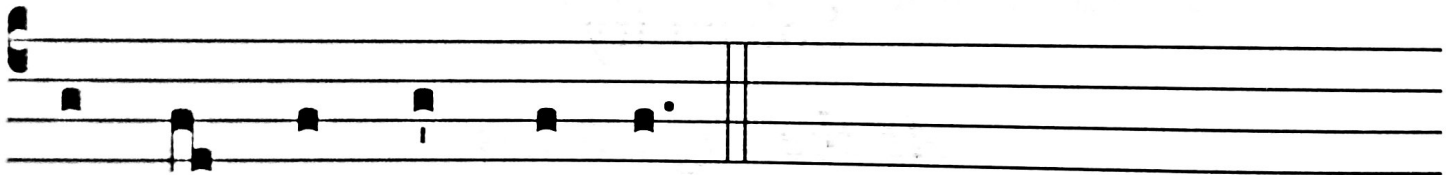
94

V. 1



T

HE Lord's are the earth and its fullness, * the world



and those who dwell in it.

OFFERTORY ANTIPHON

Tollite portas. Ps 23:7

100

2.

- i -

L

IFT up, * O gates, your lin-tels ; reach up, you

ancient portals, that the King of glo-ry may come in.

VERSES

Domini est terra. Ps 23:1

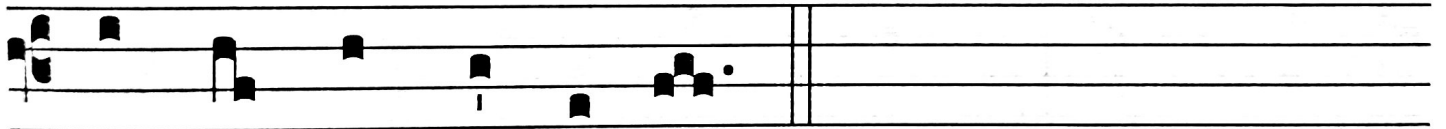
V. 1

T



102

HE Lord's are the earth and its fullness, * the world



and those who dwell in it.

COMMUNION ANTIPHON

Revelabitur gloria. Cf. Is 40:5

- i -

I.

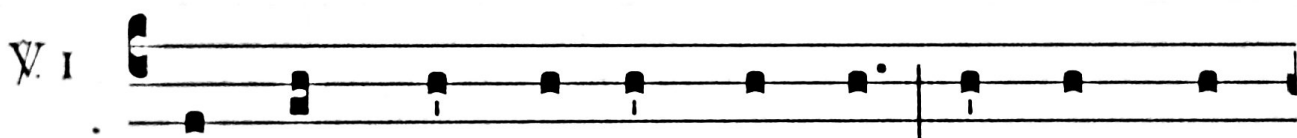
T

HE glo- ry * of the Lord will be re-vealed, and

all flesh will see the sal-va- tion of our God.

VERSES

Benedixisti, Domine, terram tuam. Ps 84: 2. 3

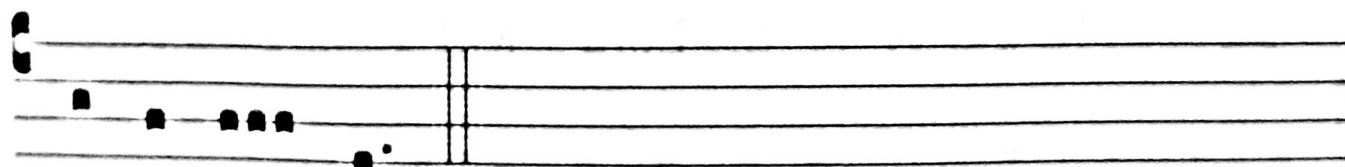


110

YOU have blessed, O Lord, your land; you have brought



back the captives of Ja- cob. * You have for-giv-en the guilt



of your peo- ple.