

FIRST SUNDAY OF LENT

ENTRANCE ANTIPHON

Invocabit me.

Ps 90: 15-16

- i -

8.

W

HEN he calls on me, * I will an- swer him ; I

364

will de- liv- er him and give him glo- ry, I will grant

him length of days.

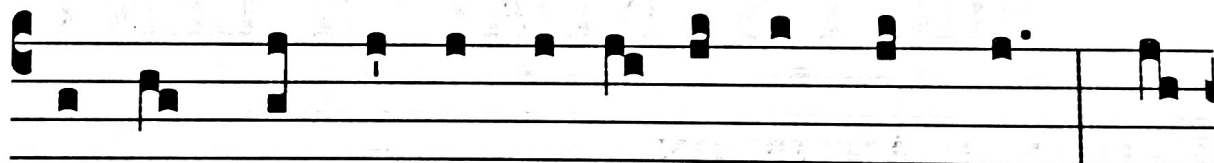
::

VERSES

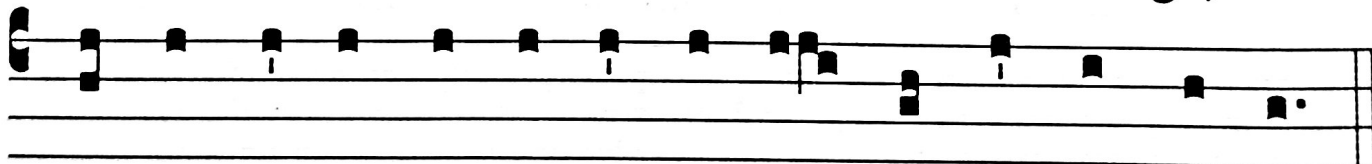
Qui habitat in adiutorio Altissimi. Ps 90: 1

366

V. I

**H**

E who dwells in the shel-ter of the Most High, * shall



a-bide un-der the pro-tec-tion of the God of heav-en.

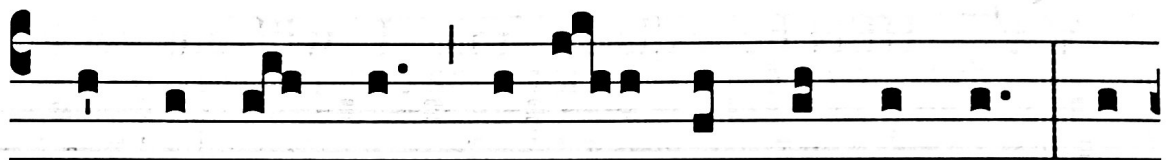
OFFERTORY ANTIPHON

Scapulis suis. Ps 90:4

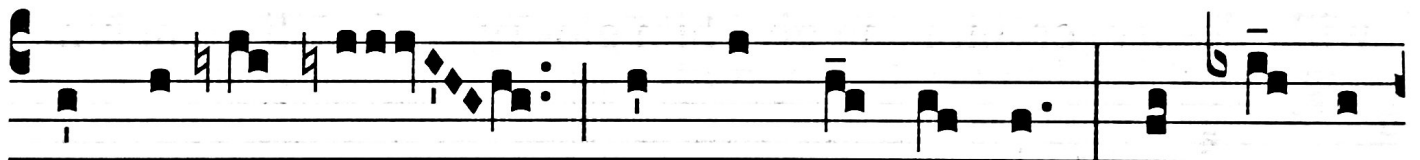
- i -

8.

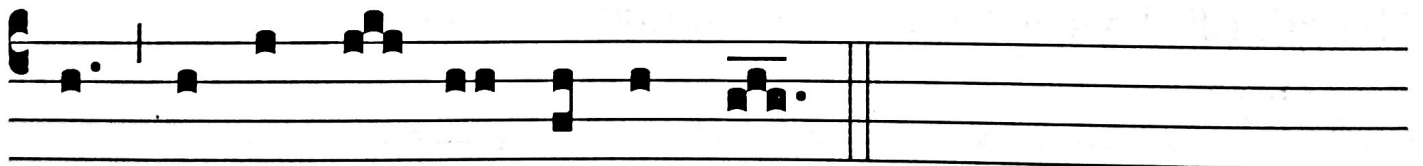
372

W

ITH his pin-ions * the Lord will cov-er you, and



un-der his wings you shall take ref-uge; his faithful-



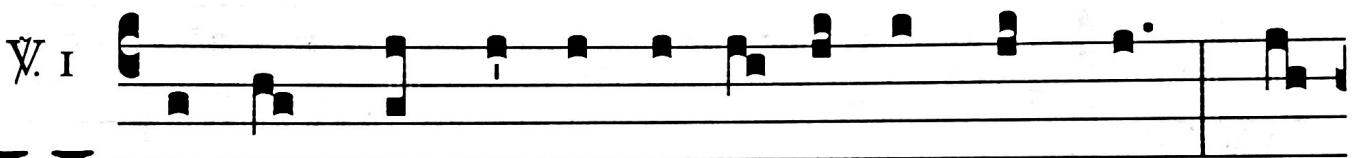
ness is a buck-ler and a shield.

First Sunday of Lent

153

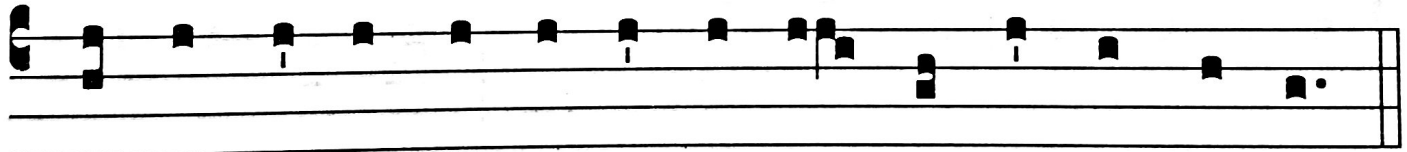
VERSES

Qui habitat in adiutorio Altissimi. Ps 90: 1



374

HE who dwells in the shel-ter of the Most High, * shall



a-bide un-der the pro-tec-tion of the God of heav-en.

COMMUNION ANTIPHON

Non in pane solo. Mt 4:4

- i -

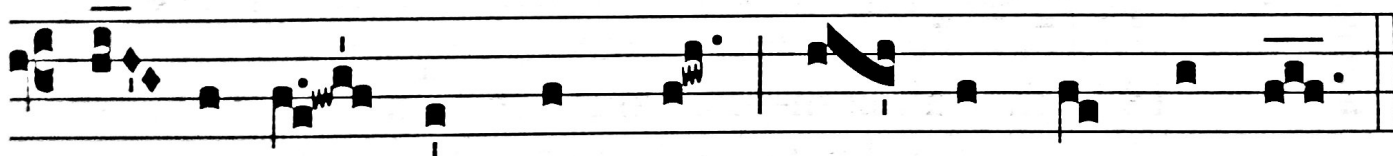
2.



380

O

NE does not live * by bread a-lone, but by



ev'-ry word that comes forth from the mouth of God.

156

First Sunday of Lent

VERSES

Dicet Domino : Susceptor meus es tu. Ps 90:2

382

Ps. 1



H

E shall say to the Lord, You are my pro-tec- tor and



my ref-uge ; * my God, in him will I trust.