

# SECOND SUNDAY OF EASTER

(or of Divine Mercy)

ENTRANCE ANTIPHON

*Quasimodo geniti infantes.*

I Pt 2:2

- i -

705

6.

**L**

IKE newborn in- fants, \* al- le- lu- ia, you must

long for the pure, spir-i-tual milk, that in him you may grow

to sal- va- tion, al- le- lu- ia, al- le- lu- ia, al- le-

lu- ia.

- ii -

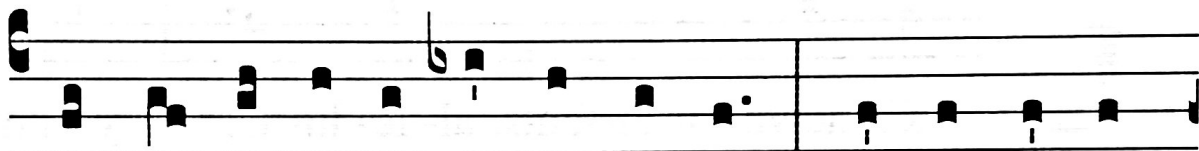
# Second Sunday of Easter

321

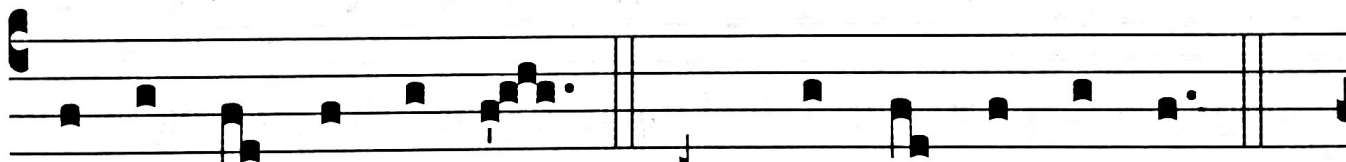
## VERSES

*Exsultate Deo, adiutori nostro.* Ps 80: 1

Use the 6 g ending for (i), the 6 F ending for (ii, iii and iv.), or when another psalm verse follows immediately.

♩. I  707

**S**ING joy-ful-ly to God our help-er, \* shout in triumph



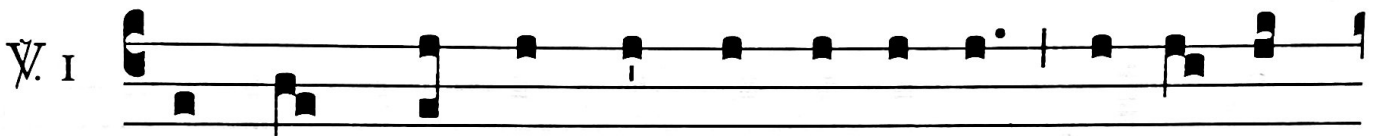
to the God of Ja- cob. Or : the God of Ja- cob.



Second Sunday of Easter

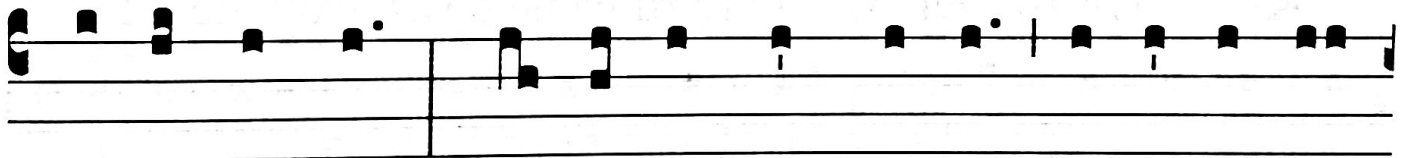
327

VERSES *Lapidem quem reprobaverunt ædificantes. Ps 117:22*

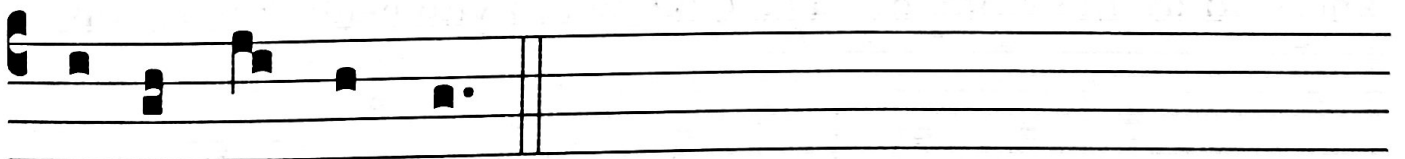


721

**T** HE stone which the build-ers re-ject-ed has become



the cor-nerstone. \* This is the Lord's do-ing, and it is won-



der-ful in our eyes.

Second Sunday of Easter

329

COMMUNION ANTIPHON

*Mite manum tuam.*  
*Jn 20:27*

- i -

6.

726

**B**

Ring your hand \* and feel the place of the nails,

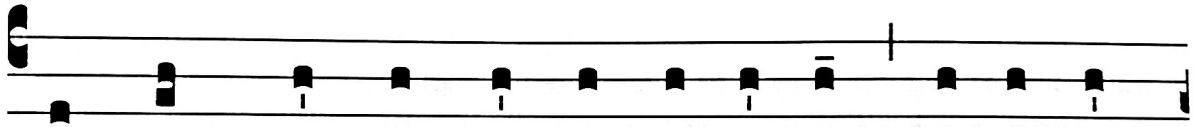
al- le- lu- ia ; and do not be un-be-lieving but be-

liev- ing, al- le- lu- ia, al- le- lu- ia.

VERSES *Lapidem quem reprobaverunt ædificantes. Ps 117:22*

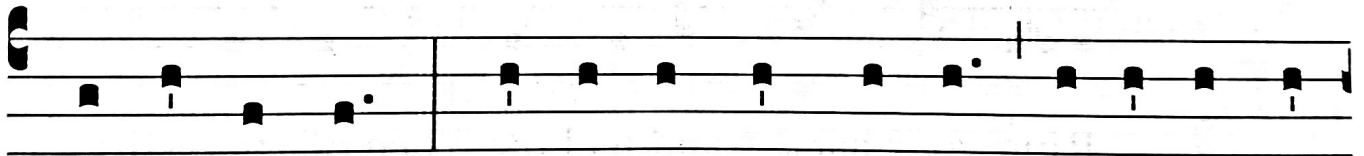
728

V. I

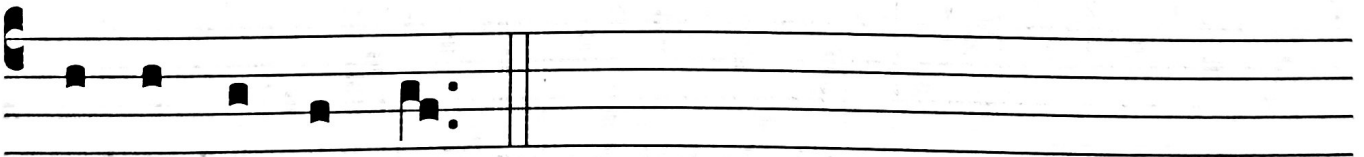


**T**

HE stone which the build-ers re-ject-ed has become



the cor-nerstone. \* This is the Lord's do-ing, and it is won-



der-ful in our eyes.