

SEVENTEENTH SUNDAY IN ORDINARY TIME

ENTRANCE ANTIPHON

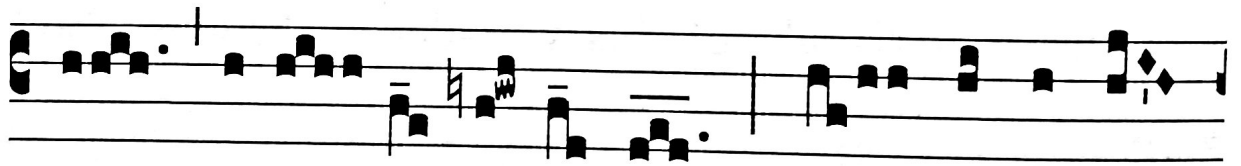
Deus in loco sancto suo.

Ps 67:6-7. 36

- i -

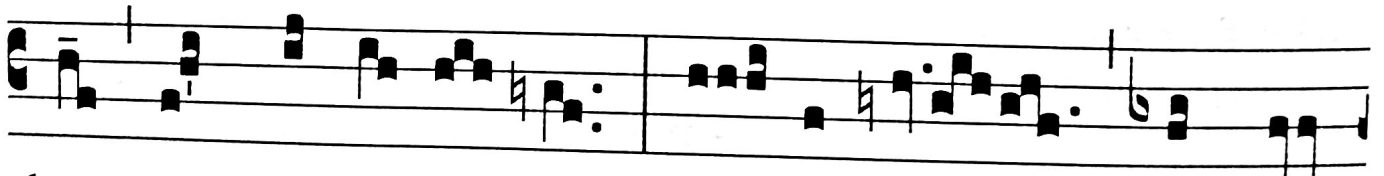
I323

5.

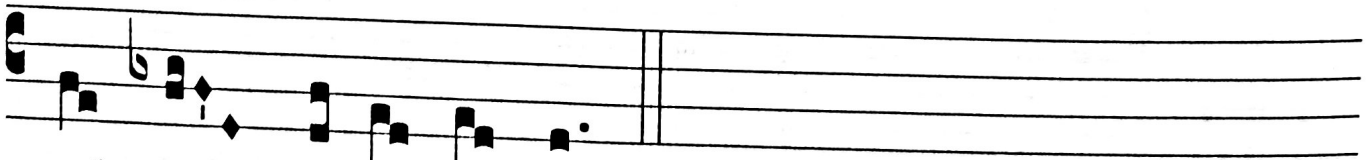


G

OD * is in his ho-ly place, God who u-nites



those who dwell in his house; he him-self gives might

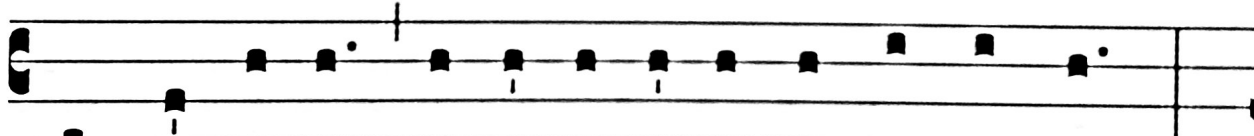


and strength to his peo-ple.

Seventeenth Sunday in Ordinary Time 565


VERSES

Exsurgat Deus. Ps 67:2

♩. I 

1325

L ET God a-rise, and let his en- e-mies be scattered, *



and let them that hate him flee be-fore him.

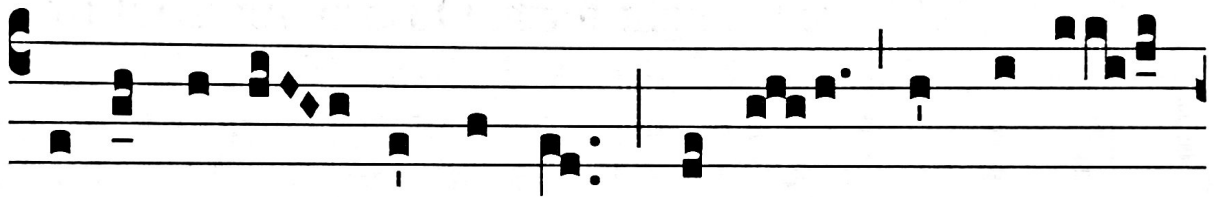
OFFERTORY ANTIPHON

Exaltabo te, Domine.
Ps 29:2-3

- i -

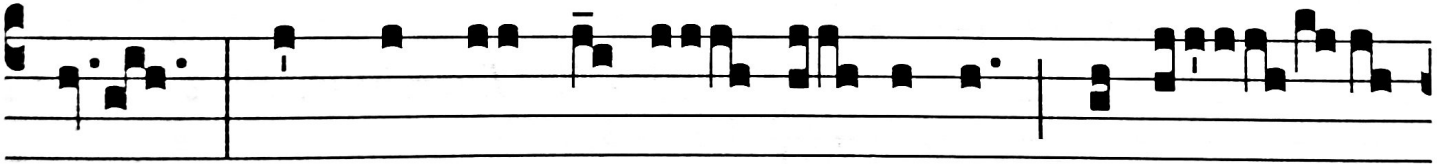
2.

I

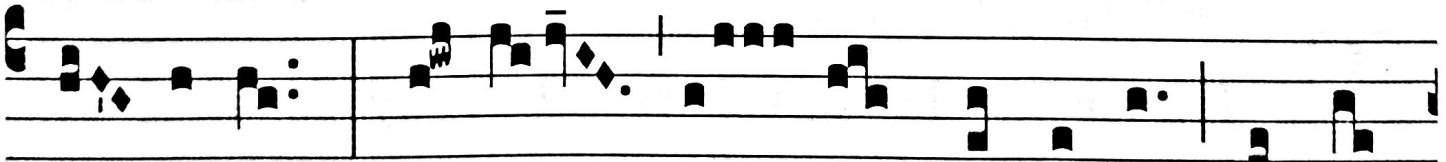


1330

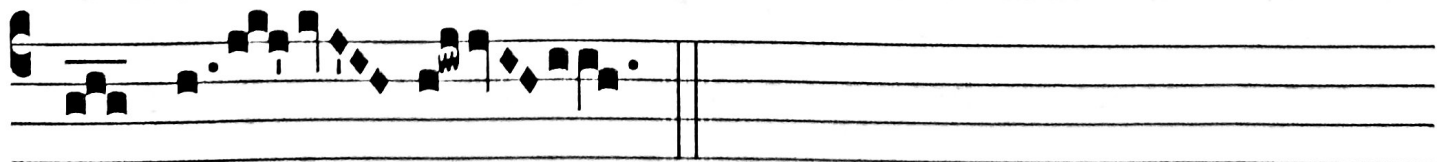
will ex-tol you, O Lord,* for you have up-held



me, and have not let my en-emies re-joice



o-ver me. O Lord, I have cried to you, and you



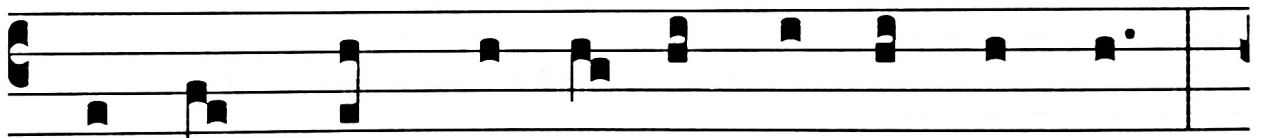
have healed me.

VERSES

Domine, eduxisti. Ps 29:4

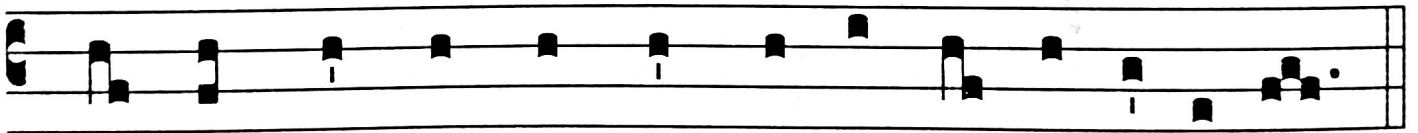
I332

Ps. I



Y

OU have brought forth, O Lord, my soul from hell; *



you have saved me from those who go down in- to the pit.

COMMUNION ANTIPHON

Benedic, anima mea, Domino.

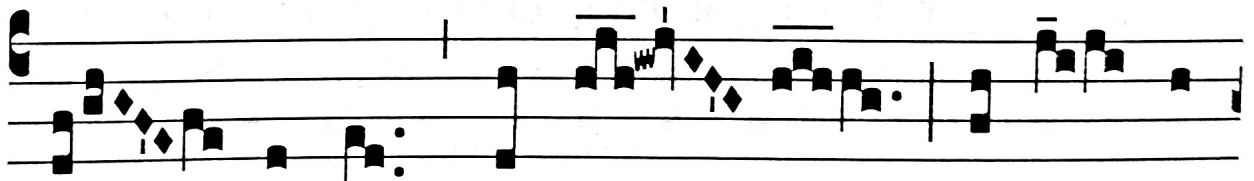
Ps 102:2

- i -

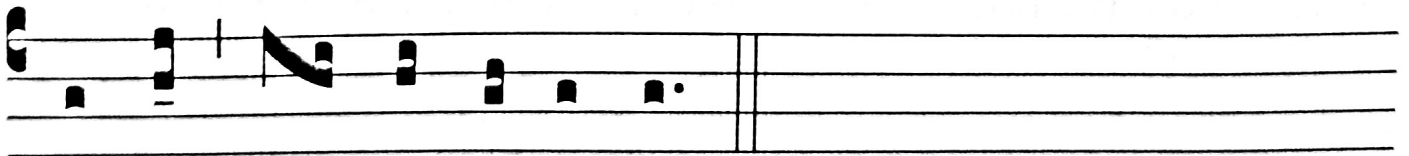
8.

I337

B



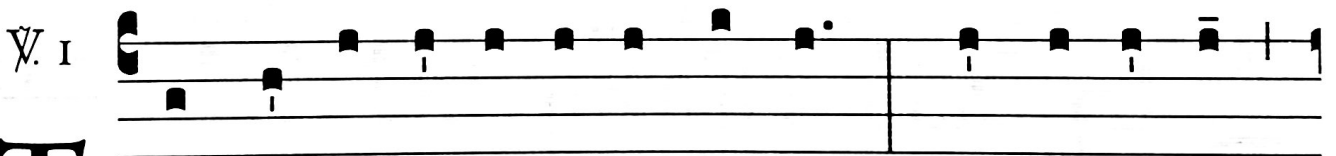
LESS the Lord, * O my soul, and nev- er



for- get all his ben- e- fits.

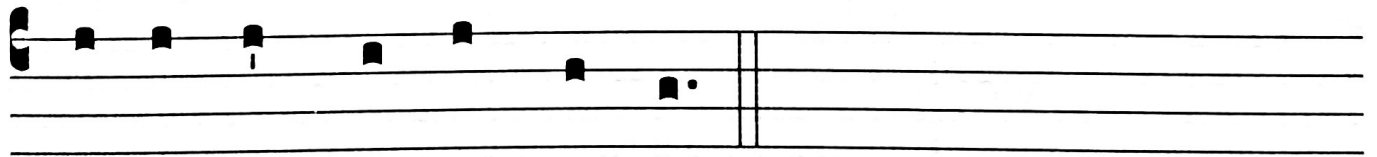
VERSES

Miserator et misericors Dominus. Ps 102:8



1339

T HE Lord is mer-ci-ful and gracious, * slow to an-ger



and a-bound-ing in mer-cy.