

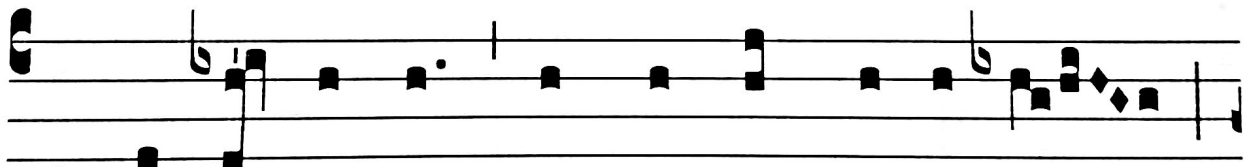
TWENTY-THIRD SUNDAY IN ORDINARY TIME

ENTRANCE ANTIPHON

Iustus es, Domine.
Ps 118: 137. 124

- i -

I.



1462

Y

OU are just, O Lord,* and your judgment is right ;



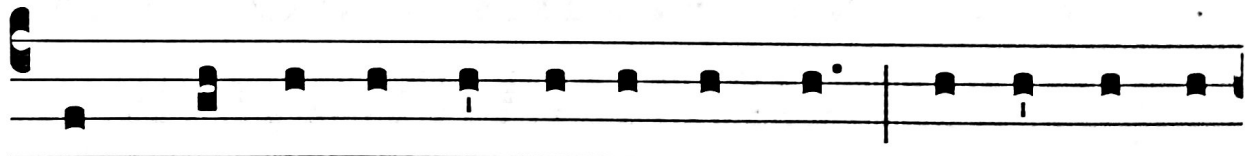
treat your ser-vant in ac-cord with your mer-ci-ful love.

VERSES

In corde mea abscondi eloquia tua. Ps 118:11-12

1464

V. I

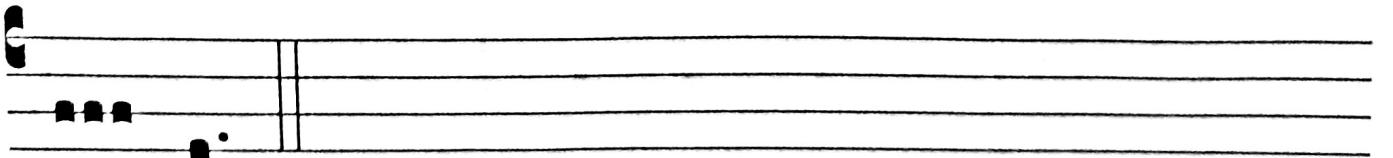


Y

OUR words I have hid-den in my heart, that I may not



sin a-against you. * Bless-ed are you, O Lord, teach me your



stat-utes.

OFFERTORY ANTIPHON

Oravi Deum meum ego Daniel.

Dn 9:4. (2.) 17. 19

- i -

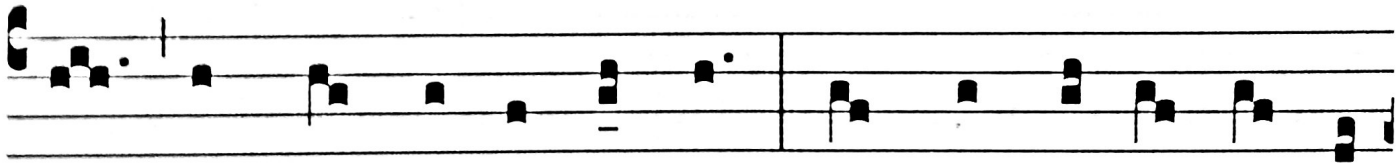
1469

+

I



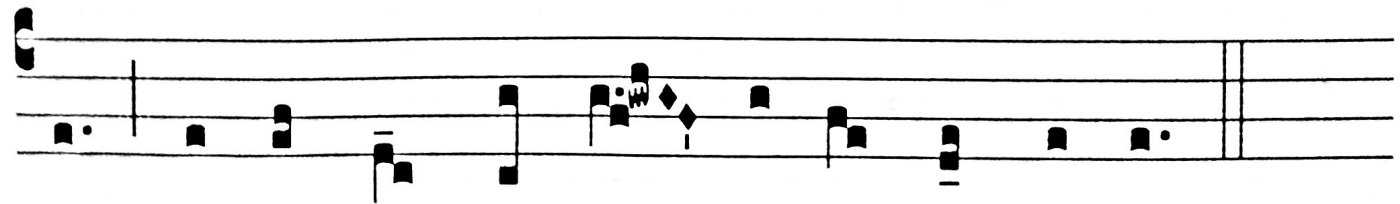
, Dan-iel,*prayed to my God, say-ing: Hear, O



Lord, the prayers of your ser-vant; show your face up- on your



ho- ly place, and fav'-ra- bly look down up- on this peo-

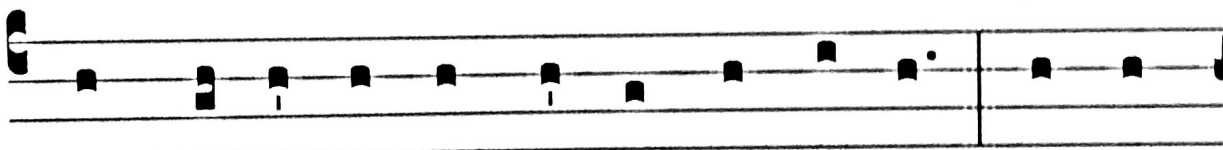


ple up- on whom your name is in-voked, O God.

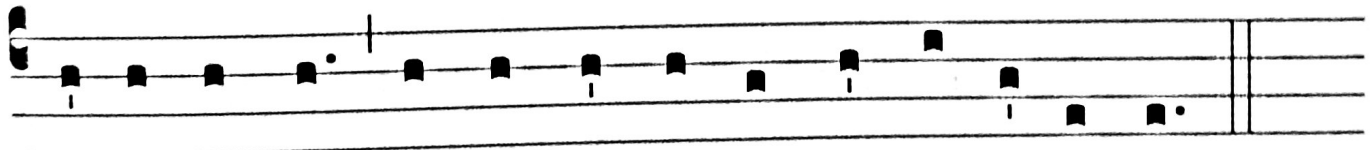
..

VERSES

Adhuc me loquente. Dn 9: 20

♩. I  1471

NOW while I was yet speaking, and praying, * and con-



fessing my sins, and the sins of my peo-ple Is-ra-el.

COMMUNION ANTIPHON *Quemadmodum desiderat cervus.*
Ps 41:2-3

- i -

4. g

L

IKE the deer that yearns * for running streams, so

I475

my soul is yearning for you, my God; my soul is thirsting

for God, the liv- ing God.

..

