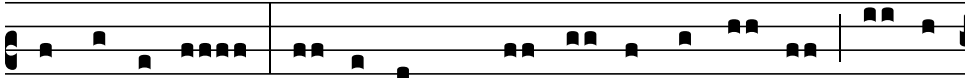


# IN BABILONE

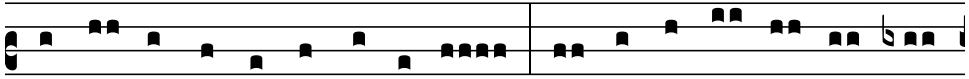
ACBOH #270; OCP'23 #490, #725



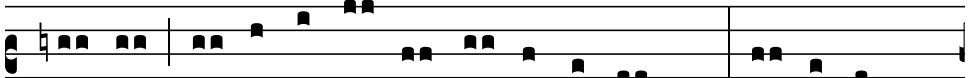
DO TI LA SO DO RE DO RE MI DO FA MI RE MI RE DO TI



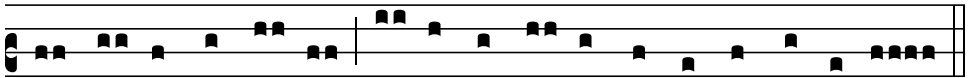
DO RE TI DO- DO TI LA SO DO RE DO RE MI DO- FA MI



RE MI RE DO TI DO RE TI DO- DO RE MI FA MI RE REflat



RE RE RE MI FA SO DO RE DO TI LA SO- DO TI LA SO



DO RE DO RE MI DO FA MI RE MI RE DO TI DO RE TI DO-