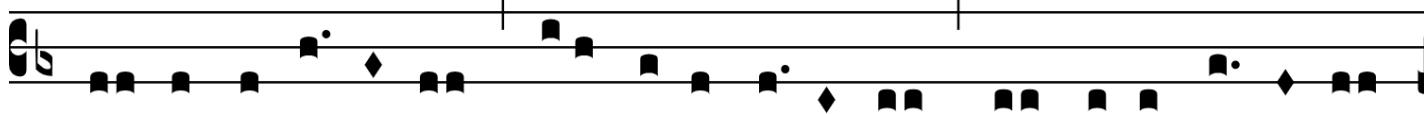
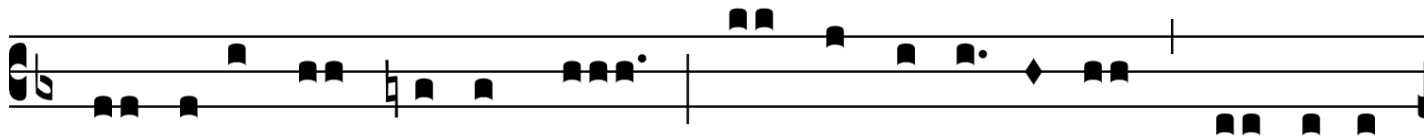


# PANIS ANGELICUS

## LAMBILLOTE - S1



Pa-nis an-ge-li-cus- Fit panis hominum; Dat panis coe-li-cus  
*Te tri na De i tas, U na que po sci mus, Sic nos tu vi si ta,*



Fi- guris ter- mi num:- O res mi-ra-bi-lis! Manducatur  
*Si cutte co li mus; Per tu as se mi tas Duc nos quo*

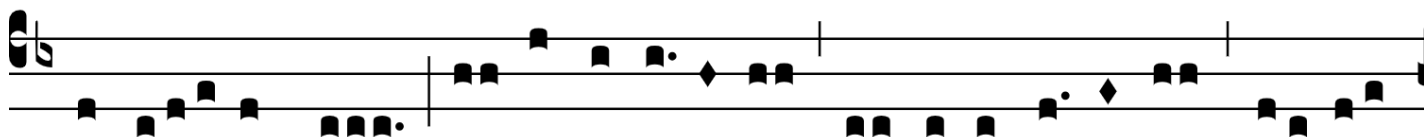


Dominum- Pau-per, ser-vus et hu- milis.- .- .-  
*ten di mus, Ad lu cem qua in ha bi tas. A men*

## LAMBILLOTE - A2



Pa-nis an-ge-li-cus- Fit panis ho-minum; Dat panis coe-li-cus Fi- gu-  
*Te tri na De i tas, U na que po sci mus, Sic nos tu vi si ta, Si cut*



ris ter- mi num:- O res mi-ra-bi-lis! Manducatur Dominum-Pau-per,  
*te co li mus; Per tu as se mi tas Duc nos quo ten di mus, Ad lu*



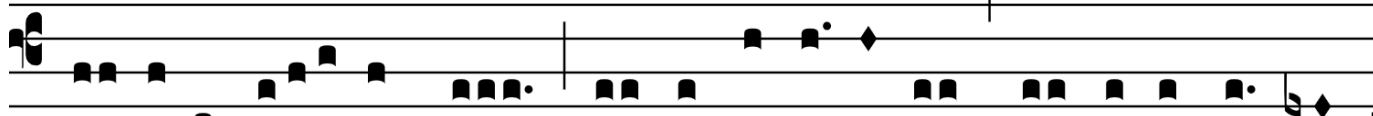
ser-vus et hu- milis.- .- .-  
*cem qua in ha bi tas. A men*

# PANIS ANGELICUS

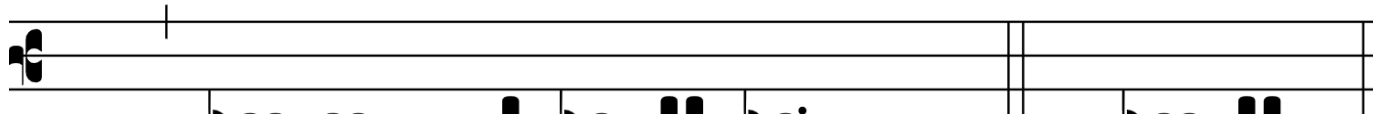
## LAMBILLOTE - T3



Pa-nis an-ge-li-cus- Fit panis hominum; Dat panis coe-li-cus  
*Te tri na De i tas, U na que po sci mus, Sic nos tu vi si ta,*



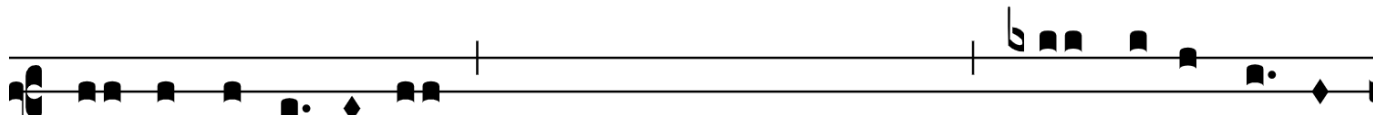
Fi- guris ter- mi num:- O res mi-ra-bi-lis! Manducat Do- mi-  
*Si cutte co li mus; Per tu as se mi tas Duc nos quo ten di*



num- Pau-per, ser-vus et hu- milis.- .- .-  
*mus, Ad lu cem qua min ha bi tas. A men*

# PANIS ANGELICUS

## LAMBILLOTE - B4



Pa-nis an-ge-li-cus- Fit pa-nis hominum; Dat panis coe-li-  
*Te tri na De i tas, U na que po sci mus, Sic nos tu vi si*



cus Fi- guris ter- mi num:- O res mi-ra-bi-lis! Manducat  
*ta, Si cutte co li mus; Per tu as se mi tas Duc nos quo*



Dominum- Pau-per, ser- vus et hu- milis.- .- .-  
*ten di mus, Ad lu cem qua in ha bi tas. A men*