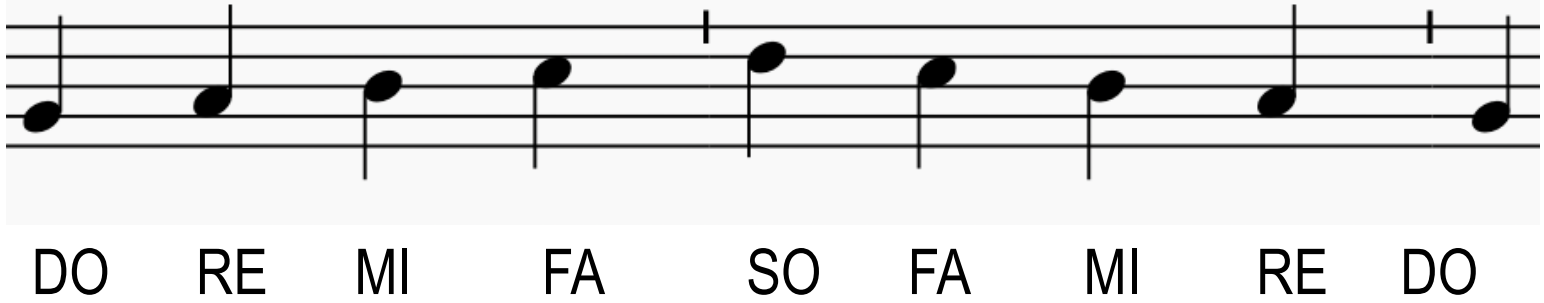


INITIATION TO THE "MOVABLE DO" METHOD OF SIGHT-READING (MARCH '24)
questions? longbeachchant@live.com

The grades of the scale we need, and their position on the staff...



... to sing the "Lord Have Mercy" in *BREAKING BREAD* # 4
(*BREAKING BREAD* is the English worship aid booklet in the pews at St Matthew)



The grades of the scale we need, and their position on the staff...



LA DO RE MI FA MI RE DO LA

...to sing "Holy, Holy.." in BREAKING BREAD # 9

Ho-ly, Ho-ly, Ho-ly Lord God of hosts. Heav-en and earth are
full of your glo-ry. Ho-san-na in the high-est. Bless-ed is he
who comes in the name of the Lord. Ho-san-na in the high-est.

The image shows a three-staff musical score. Each staff begins with a treble clef. The notes are simple quarter and eighth notes with stems. The lyrics are written below the notes, aligned with the musical phrases. The first staff contains the first two measures, the second staff contains the next two measures, and the third staff contains the final two measures. The score ends with a double bar line.

The grades of the scale we need, and their position on the staff...



MI FA SO LA TI DO TI LA SO FA MI

...to sing "We proclaim..." in BREAKING BREAD # 10

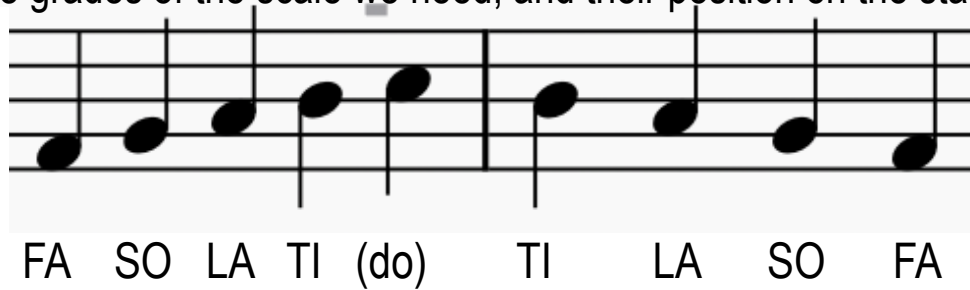


We pro-claim your Death, O Lord, and pro-fess your Res-ur-rec-tion



un-til you come a-gain.

The grades of the scale we need, and their position on the staff...



... to sing "Lamb of God" in BREAKING BREAD # 14

